

Namibia Craft Shop





JEWELLERY & ACCESSORIES



LEATHER RHINO KEYCHAIN

SKU: N/A

Categories: [Leather](#), [Crafts & Curios](#), [Jewellery & Accessories](#)



LEATHER ELEPHANT KEYCHAIN

SKU: N/A

Categories: [Leather](#), [Crafts & Curios](#), [Jewellery & Accessories](#)



HEART TASSEL KEYCHAINS

SKU: N/A

Categories: [Leather](#), [Crafts & Curios](#), [Jewellery & Accessories](#)



KUDU ZIP POUCH

SKU: N/A

Categories: [Leather](#), [Crafts & Curios](#), [Jewellery & Accessories](#)



WRAP LEATHER POUCH

SKU: N/A

Categories: [Leather](#), [Crafts & Curios](#), [Jewellery & Accessories](#)



KUDU CROSSBODY BAG

SKU: N/A

Categories: [Leather](#), [Crafts & Curios](#), [Jewellery & Accessories](#)



LEATHER SPECTACLES CASES

SKU: N/A

Categories: [Leather](#), [Crafts & Curios](#), [Jewellery & Accessories](#)



ZEBRA & LEATHER SATCHEL

SKU: N/A

Categories: [Leather](#), [Crafts & Curios](#), [Jewellery & Accessories](#), [Uncategorized](#)



DRAWSTRING POUCH

SKU: N/A

Categories: [Leather](#), [Crafts & Curios](#), [Jewellery & Accessories](#)



TUSK BARREL MESSENGER

SKU: N/A

Categories: [Leather](#), [Crafts & Curios](#), [Jewellery & Accessories](#)



COWHIDE MESSENGER (BLACK)

SKU: N/A

Categories: [Leather](#), [Crafts & Curios](#), [Jewellery & Accessories](#), [Uncategorized](#)



PAINTED GIRAFFE TOTE

SKU: N/A

Categories: [Jewellery & Accessories](#), [Crafts & Curios](#), [Leather](#)



SHELL & BEAD NECKLACE

SKU: N/A

Categories: [Jewellery & Accessories](#), [Arts & Collectibles](#), [Crafts & Curios](#)



OMBA STATEMENT NECKLACE

SKU: N/A

Categories: [Jewellery & Accessories](#), [Arts & Collectibles](#), [Crafts & Curios](#), [Upcycled / Recycled Craft](#)



TRADITIONAL SNUFF CONTAINERS

SKU: N/A

Categories: [Crafts & Curios](#), [Arts & Collectibles](#), [Jewellery & Accessories](#)



ANTIQUE OMBA SHELLS

SKU: N/A

Categories: [Jewellery & Accessories](#), [Arts & Collectibles](#), [Crafts & Curios](#), [Upcycled / Recycled Craft](#)



FUR LEATHER CLAMP NECKLACE

SKU: N/A

Categories: [Jewellery & Accessories](#), [Arts & Collectibles](#), [Crafts & Curios](#)



FUR CLAMP NECKLACE

SKU: N/A

Categories: [Jewellery & Accessories](#), [Arts & Collectibles](#), [Crafts & Curios](#)



SPRINGBOK FUR FRAME NECKLACE

SKU: N/A

Categories: [Jewellery & Accessories](#), [Arts & Collectibles](#), [Crafts & Curios](#)



ALUMINIUM & GLASS NECKLACE

SKU: N/A

Categories: [Jewellery & Accessories](#), [Arts & Collectibles](#), [Crafts & Curios](#), [Upcycled / Recycled Craft](#)



BROWN SPRINGBOK CUFF

SKU: N/A

Categories: [Jewellery & Accessories](#), [Crafts & Curios](#)



ORANGE SPRINGBOK CUFF

SKU: N/A

Categories: [Jewellery & Accessories](#), [Crafts & Curios](#)



BASKING LIZARD EARRINGS

SKU: N/A

Categories: [Jewellery & Accessories](#), [Crafts & Curios](#), [Uncategorized](#)



WOOD CIRCLE EARRINGS

SKU: N/A

Categories: [Jewellery & Accessories](#), [Arts & Collectibles](#), [Crafts & Curios](#)



ANIMAL CUTOUT NECKLACES

SKU: N/A

Categories: [Jewellery & Accessories](#), [Arts & Collectibles](#), [Crafts & Curios](#)



GLASS BEAD RINGS

SKU: N/A

Categories: [Jewellery & Accessories](#), [Crafts & Curios](#)



CUTOUT PENDANT NECKLACE

SKU: N/A

Categories: [Jewellery & Accessories](#), [Arts & Collectibles](#), [Crafts & Curios](#)



AFRICA STATEMENT NECKLACE

SKU: N/A

Categories: [Jewellery & Accessories](#), [Arts & Collectibles](#), [Crafts & Curios](#)



BEADED TRADITIONAL NECKLACES

SKU: N/A

Categories: [Jewellery & Accessories](#), [Arts & Collectibles](#), [Crafts & Curios](#)



BEADED TRADITIONAL NECKLACES (PINK)

SKU: N/A

Categories: [Jewellery & Accessories](#), [Arts & Collectibles](#), [Crafts & Curios](#)



BEADED TRADITIONAL EARRINGS (PINK)

SKU: N/A

Categories: [Jewellery & Accessories](#), [Arts & Collectibles](#), [Crafts & Curios](#)



BEADED TRADITIONAL EARRINGS

SKU: N/A

Categories: [Jewellery & Accessories](#), [Crafts & Curios](#)



ROUNDED SQUARE RINGS

SKU: N/A

Categories: [Jewellery & Accessories](#), [Arts & Collectibles](#), [Crafts & Curios](#)



CAMEO STATEMENT EARRINGS (LIGHT)

SKU: N/A

Categories: [Jewellery & Accessories](#), [Arts & Collectibles](#), [Crafts & Curios](#)



UPSIDE-DOWN TEARDROP NECKLACE

SKU: N/A

Categories: [Jewellery & Accessories](#), [Arts & Collectibles](#), [Crafts & Curios](#)



NEGATIVE SPACE RING

SKU: N/A

Categories: [Jewellery & Accessories](#), [Arts & Collectibles](#), [Crafts & Curios](#)



WHITE SPARKLE RING

SKU: N/A

Categories: [Jewellery & Accessories](#), [Arts & Collectibles](#), [Crafts & Curios](#)



CAMEO SILHOUETTE NECKLACE

SKU: N/A

Categories: [Jewellery & Accessories](#), [Arts & Collectibles](#), [Crafts & Curios](#)



ONYX RING

SKU: N/A

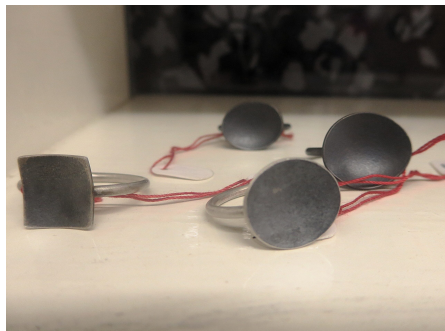
Categories: [Jewellery & Accessories](#), [Arts & Collectibles](#), [Crafts & Curios](#)



MOONSTONE RING

SKU: N/A

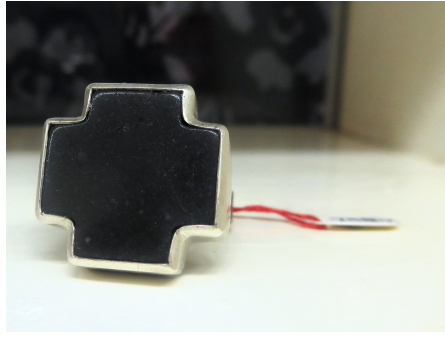
Categories: [Jewellery & Accessories](#), [Arts & Collectibles](#), [Crafts & Curios](#)



SCULPTED CONCAVE RINGS

SKU: N/A

Categories: [Jewellery & Accessories](#), [Arts & Collectibles](#), [Crafts & Curios](#)



BLACK CROSS RING

SKU: N/A

Categories: [Jewellery & Accessories](#), [Arts & Collectibles](#), [Crafts & Curios](#)



HEPTAGON RINGS

SKU: N/A

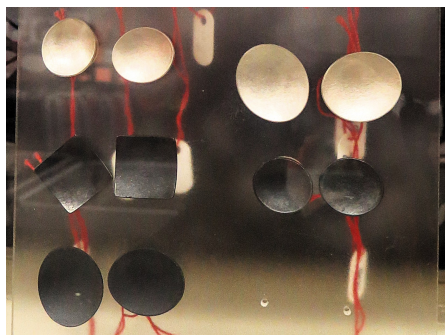
Categories: [Jewellery & Accessories](#), [Arts & Collectibles](#), [Crafts & Curios](#)



PYRITE NUGGET PENDANT

SKU: N/A

Categories: [Jewellery & Accessories](#), [Arts & Collectibles](#), [Crafts & Curios](#)



SCULPTED CONCAVE EARRINGS

SKU: N/A

Categories: [Jewellery & Accessories](#), [Arts & Collectibles](#), [Clothing & Shoes](#)



CAMEO STATEMENT EARRINGS (DARK)

SKU: N/A

Categories: [Jewellery & Accessories](#), [Arts & Collectibles](#), [Crafts & Curios](#)



BEADED FLAG COLOURS BRACELET

SKU: N/A

Categories: [Jewellery & Accessories](#), [Arts & Collectibles](#), [Crafts & Curios](#)



BEADED TUBULAR NECKLACES

SKU: N/A

Categories: [Jewellery & Accessories](#), [Arts & Collectibles](#), [Crafts & Curios](#)



MULTI-COLORED BEADED NECKLACE

SKU: N/A

Categories: [Jewellery & Accessories](#), [Arts & Collectibles](#), [Crafts & Curios](#)



ELEPHANT CHARM BRACELET

SKU: N/A

Categories: [Jewellery & Accessories](#), [Arts & Collectibles](#), [Crafts & Curios](#)



AFRICA PATCH BAGS

SKU: N/A

Categories: [Jewellery & Accessories](#), [Arts & Collectibles](#), [Crafts & Curios](#), [Upcycled / Recycled Craft](#)



GIRAFFE TOTE

SKU: N/A

Categories: [Jewellery & Accessories](#), [Arts & Collectibles](#)



NAMIBIAN MAP TOTE

SKU: N/A

Categories: [Jewellery & Accessories](#), [Arts & Collectibles](#), [Crafts & Curios](#)



EMBROIDERED CAPS

SKU: N/A

Categories: [Jewellery & Accessories](#), [Arts & Collectibles](#), [Clothing & Shoes](#), [Crafts & Curios](#)



BRIGHT STITCH POUCH

SKU: N/A

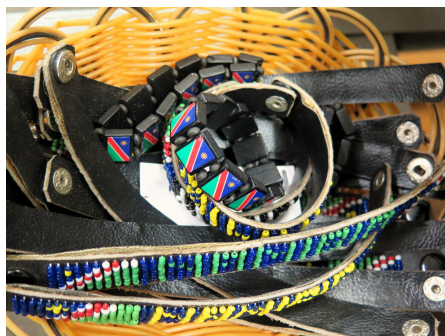
Categories: [Crafts & Curios](#), [Arts & Collectibles](#), [Jewellery & Accessories](#)



ASSORTED ZIP POUCHES

SKU: N/A

Categories: [Crafts & Curios](#), [Arts & Collectibles](#), [Jewellery & Accessories](#)



ASSORTED LEATHER NAMIBIA BRACELETS

SKU: N/A

Categories: [Jewellery & Accessories](#), [Arts & Collectibles](#), [Crafts & Curios](#), [Leather](#)



COPPER BANGLES

SKU: N/A

Categories: [Jewellery & Accessories](#), [Crafts & Curios](#)



OSTRICH SHELL EARRINGS

SKU: N/A

Categories: [Crafts & Curios](#), [Jewellery & Accessories](#)



FISH CHARM BEADED BRACELET

SKU: N/A

Categories: [Jewellery & Accessories](#), [Crafts & Curios](#)



MALACHITE EARRINGS

SKU: N/A

Categories: [Jewellery & Accessories](#), [Crafts & Curios](#)



BEADED CHAIN EARRINGS

SKU: N/A

Categories: [Jewellery & Accessories](#), [Crafts & Curios](#)



ASSORTED BEAD & OSTRICH SHELL NECKLACES

SKU: N/A

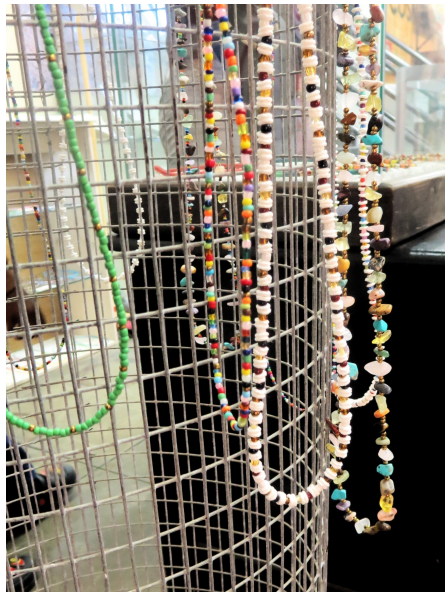
Categories: [Jewellery & Accessories](#), [Crafts & Curios](#)



BEADED GEMSTONE NECKLACES

SKU: N/A

Categories: [Jewellery & Accessories](#), [Crafts & Curios](#)



ASSORTED LONG BEADED NECKLACES

SKU: N/A

Categories: [Jewellery & Accessories](#), [Crafts & Curios](#)



STRIPED BEADED NECKLACE

SKU: N/A

Categories: [Jewellery & Accessories](#), [Crafts & Curios](#)



BEADED ELEPHANT NECKLACE

SKU: N/A

Categories: [Jewellery & Accessories](#), [Crafts & Curios](#)



NAMIBIAN COLOURS NECKLACE

SKU: N/A

Categories: [Jewellery & Accessories](#), [Crafts & Curios](#)



CROCHET HATS

SKU: N/A

Categories: [Crafts & Curios](#), [Clothing & Shoes](#), [Jewellery & Accessories](#)



WOVEN CROCHET CROSSBODY

SKU: N/A

Categories: [Crafts & Curios](#), [Jewellery & Accessories](#)



CROCHET CLUTCH CROSSBODY

SKU: N/A

Categories: [Crafts & Curios](#), [Jewellery & Accessories](#), [Leather](#)



ROUND HANDLE TOTE

SKU: N/A

Categories: [Jewellery & Accessories](#), [Crafts & Curios](#)



FRIENDSHIP BRACELET

SKU: N/A

Categories: [Crafts & Curios](#), [Jewellery & Accessories](#)



ACCENTED AFRICA TOTE

SKU: N/A

Categories: [Crafts & Curios](#), [Jewellery & Accessories](#)



ELEPHANT DRAWSTRING BAGS

SKU: N/A

Categories: [Crafts & Curios](#), [Jewellery & Accessories](#)



AFRICAN PRINT TOTE BAGS

SKU: N/A

Categories: [Crafts & Curios](#), [Jewellery & Accessories](#)



BEADED CHARM

SKU: N/A

Categories: [Crafts & Curios](#), [Jewellery & Accessories](#)



BEADED ELEPHANT EARRINGS

SKU: N/A

Categories: [Crafts & Curios](#), [Jewellery & Accessories](#)



ASSORTED FABRIC POUCHES

SKU: N/A

Categories: [Crafts & Curios](#), [Jewellery & Accessories](#), [Upcycled / Recycled Craft](#)



COTTON ELEPHANT PUCH

SKU: N/A

Categories: [Crafts & Curios](#), [Jewellery & Accessories](#), [Upcycled / Recycled Craft](#)



MIXED PRINT POUCHES

SKU: N/A

Categories: [Crafts & Curios](#), [Jewellery & Accessories](#), [Upcycled / Recycled Craft](#)



FRINGE TASSEL KEYCHAIN CLIPS

SKU: N/A

Categories: [Jewellery & Accessories](#), [Leather](#)



SUEDE TOTE BAGS

Artisan crafted suede totes with decorative embroidery. Designed to be both durable and fashionable for your daily adventures.

SKU: N/A

Categories: [Jewellery & Accessories](#), [Leather](#)



LEATHER TRAVEL BAG

SKU: N/A

Categories: [Jewellery & Accessories](#), [Leather](#)



ASSORTED BELTS

SKU: N/A

Categories: [Jewellery & Accessories](#), [Clothing & Shoes](#), [Leather](#)



MESSENGER BAGS

SKU: N/A

Categories: [Jewellery & Accessories](#), [Leather](#)



ASSORTED DOG COLLARS

SKU: N/A

Categories: [Jewellery & Accessories](#), [Leather](#)



ASSORTED UBUNTU BAGS

SKU: N/A

Categories: [Jewellery & Accessories](#), [Leather](#)



EMBROIDERED GLASSES POUCHES

SKU: N/A

Categories: [Jewellery & Accessories](#), [Leather](#)



LEATHER CROSSBODY BAGS

SKU: N/A

Categories: [Jewellery & Accessories](#), [Leather](#)



MINI LEATHER WALLETS

SKU: N/A

Categories: [Jewellery & Accessories](#), [Leather](#)



ASSORTED PRECIOUS STONE BEADED NECKLACES

SKU: N/A

Categories: [Jewellery & Accessories](#), [Clothing & Shoes](#)



ASSORTED BEADED BRACELETS

SKU: N/A

Categories: [Jewellery & Accessories](#), [Crafts & Curios](#)



CERAMIC PENDANTS

SKU: N/A

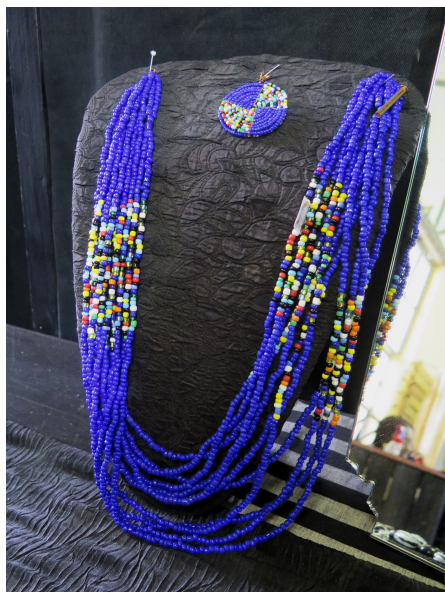
Categories: [Crafts & Curios](#), [Jewellery & Accessories](#)



STRIPED BEADED BRACELETS

SKU: N/A

Categories: [Jewellery & Accessories](#), [Crafts & Curios](#)



INDIGO MULTI-STRAND NECKLACE

SKU: N/A

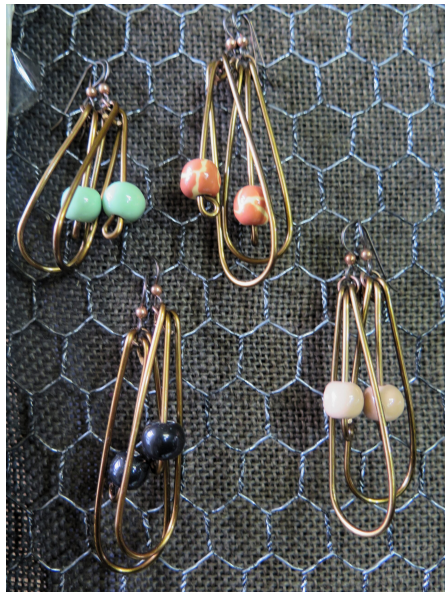
Categories: [Crafts & Curios](#), [Jewellery & Accessories](#)



TUBULAR BEADED EARRINGS

SKU: N/A

Categories: [Jewellery & Accessories](#), [Crafts & Curios](#)



TEARDROP BEAD CHARM EARRINGS

SKU: N/A

Category: [Jewellery & Accessories](#)



COLOUR BLOCK CIRCLE EARRINGS

SKU: N/A

Categories: [Crafts & Curios](#), [Jewellery & Accessories](#)



WHIMSY SPIRAL EARRINGS

SKU: N/A

Categories: [Crafts & Curios](#), [Jewellery & Accessories](#)



BEADED COIL BRACELETS

SKU: N/A

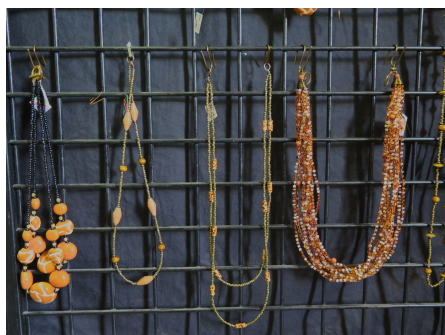
Category: [Jewellery & Accessories](#)



BEADED CUFF BRACELET W/ FLOWER

SKU: N/A

Category: [Jewellery & Accessories](#)



ASSORTED BEADED NECKLACES (ORANGE & BROWN)

SKU: N/A

Category: [Jewellery & Accessories](#)



BOLD ZEBRA BEAD JEWELLERY COORDINATE

SKU: N/A

Category: [Jewellery & Accessories](#)



DIAMOND PIN

SKU: N/A

Category: [Jewellery & Accessories](#)



INSECT KEYCHAINS

SKU: N/A

Categories: [Jewellery & Accessories](#), [Crafts & Curios](#)



LASER-CUT FABRIC EARRINGS

SKU: N/A

Category: [Jewellery & Accessories](#)



NATURE-INSPIRED PENDANTS

SKU: N/A

Category: [Jewellery & Accessories](#)



GUINEA FOWL FEATHER PENDANT

SKU: N/A

Category: [Jewellery & Accessories](#)



ELEPHANT LASER ENGRAVED EARRINGS

SKU: N/A

Category: [Jewellery & Accessories](#)



BEADED ANIMAL CHARM BRACELET

SKU: N/A

Category: [Jewellery & Accessories](#)



OVAHIMBA-INSPIRED NECKLACE

SKU: N/A

Categories: [Leather](#), [Jewellery & Accessories](#)



CREAM CUFFS

SKU: N/A

Category: [Jewellery & Accessories](#)



BLACK & WHITE CUFFS

SKU: N/A

Categories: [Jewellery & Accessories](#), [Upcycled / Recycled Craft](#)



BLACK & WHITE BEADED TWIST NECKLACE

SKU: N/A

Category: [Jewellery & Accessories](#)



ASSORTED CUFFS

SKU: N/A

Categories: [Jewellery & Accessories](#), [Upcycled / Recycled Craft](#)



BEADED STATEMENT NECKLACES

SKU: N/A

Category: [Jewellery & Accessories](#)



STAMP-PRINTED TOTE BAGS

SKU: N/A

Category: [Jewellery & Accessories](#)



ASSORTED BEADED BRACELETS

SKU: N/A

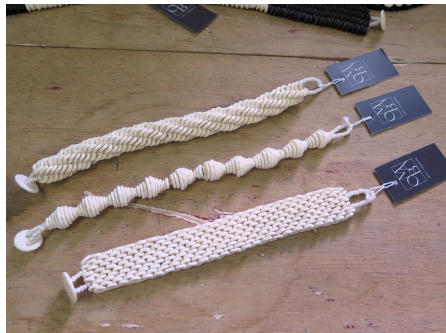
Category: [Jewellery & Accessories](#)



B&W TUBULAR BEADED BRACELETS

SKU: N/A

Category: [Jewellery & Accessories](#)



ASSORTED WHITE BEADED BRACELETS

SKU: N/A

Category: [Jewellery & Accessories](#)



B&W CONTRAST BRACELET

SKU: N/A

Category: [Jewellery & Accessories](#)



B&W BEADED NECKLACE

SKU: N/A

Category: [Jewellery & Accessories](#)



WILD SILK SCARVES

SKU: N/A

Category: [Jewellery & Accessories](#)

BRACELET CLASSIC LARGE



Bracelet Classic Large

Natural

±235mm

Artisanal beads

30g

Weight

0.01 kg

Dimensions

21.5 × 2 × 1 cm

SKU: OMB009

Category: [Jewellery & Accessories](#)

BRACELET CLASSIC MEDIUM



Bracelet Classic Medium

Natural

±215mm

Artisanal beads

30g

Weight

0.01 kg

Dimensions

21.5 × 2 × 1 cm

SKU: OMB010

Category: [Jewellery & Accessories](#)

BRACELET CLASSIC SMALL



Bracelet Classic Small
 Natural
 ±195mm
 Artisanal beads
 30g

Weight 0.01 kg
 Dimensions 21.5 x 2 x 1 cm

SKU: OMB011
Category: [Jewellery & Accessories](#)

PENDANT WITH NECKLACE*, PANGOLIN: 925 STERLING SILVER, 375 GOLD (9CT), 4 MM RHODOLITE* (GARNET)



Pendant with necklace*, pangolin: 925 Sterling Silver, 375 Gold (9ct), 4 mm Rhodolite* (garnet)
 925 Sterling Silver, 375 Gold (9ct), 4 mm rhodolite* (garnet)
 25 x 19mm (with pendant loop)
 925 Sterling Silver, 375 Gold (9ct), 4 mm rhodolite* (garnet)
 8.3g

Weight 0.1638 kg
 Dimensions 13 x 18 x 3.5 cm

SKU: HL3041
Category: [Jewellery & Accessories](#)

PENDANT WITH NECKLACE*, MEDIUM SIZE AFRICA: OXIDIZED 925 STERLING SILVER, 750 GOLD (18CT), 3 MM PERIDOT*



Pendant with necklace*, medium size Africa: oxidized 925 Sterling Silver, 750 Gold (18ct), 3 mm Peridot*
 oxidized 925 Sterling Silver, 750 Gold (18ct), 3 mm Peridot*
 31 x 22 mm (with pendant loop)
 oxidized 925 Sterling Silver, 750 Gold (18ct), 3 mm Peridot*
 5.2g

Weight 0.1638 kg
 Dimensions 13 x 18 x 3.5 cm

SKU: HL4004
Category: [Jewellery & Accessories](#)

PENDANT WITH NECKLACE*, NAMIBIA: 375 GOLD (9CT)



Pendant with necklace*, Namibia: 375 Gold (9ct)
 375 Gold (9ct)
 24 x 16 mm (with pendant loop)
 375 Gold (9ct)
 1.8g

Weight 0.1638 kg
 Dimensions 13 x 18 x 3.5 cm

SKU: HL4021
Category: [Jewellery & Accessories](#)



BRACELET GUINEA FOWL FEATHER: 925 STERLING SILVER, WHITE FRESHWATER PEARLS, ADJUSTABLE LENGTH

Bracelet guinea fowl feather: 925 Sterling Silver, white freshwater pearls, adjustable length

925 Sterling Silver, white freshwater pearls

feather: 26 x 11 mm; length adjustable between 175 - 205 mm

925 Sterling Silver, white freshwater pearls

4.3g

Weight

0.1638 kg

Dimensions

13 x 18 x 3.5 cm

SKU: HL1045

Category: [Jewellery & Accessories](#)



PENDANT SMALL GUINEA FOWL FEATHER NATURAL

Pendant small, Aluminium cut Guinea fowl feather with brass natural tone. Incl black Silicon choker

Metallic

Pendant, 42mmx23mm Choker 45cm long 3mm thick

Aluminium

7g

Weight

0.00 kg

Dimensions

4.2 x 2.3 x 0.5 cm

SKU: TAM001

Category: [Jewellery & Accessories](#)



EARRINGS GUINEA FOWL FEATHER NATURAL

Earrings, Aluminium cut Guinea fowl feather with brass natural tone. Stainless steel hooks

Metallic

Earring (incl hook) 50mmx18mm (each)

Aluminium

4.5g

Weight

0.00 kg

Dimensions

5 x 1.8 x 0.5 cm

SKU: TAM002

Category: [Jewellery & Accessories](#)



EARRINGS GUINEA FOWL FEATHER BRASS

Earrings Aluminium cut Guinea fowl feather with brass metallic tone. Stain less steel hooks

Metallic

Earring (incl hook) 50mmx18mm (each)

Aluminium

4.5g

Weight

0.00 kg

Dimensions

4 x 1.8 x 0.5 cm

SKU: TAM003

Category: [Jewellery & Accessories](#)



PENDANT SMALL GUINEA FOWL FEATHER BRASS

Pendant small Aluminium cut Guinea fowl feather with brass metallic tone. Incl. silicon choker
 Metallic
 Pendant, 42mmx23mm Choker 45cmlong 3mm thick
 Aluminium
 4.5g

Weight 0.00 kg
 Dimensions 4.2 × 2.3 × 0.5 cm

SKU: TAM004
Category: [Jewellery & Accessories](#)



PENDANT LARGE GUINEA FOWL FEATHER BRASS

Pendant large, Aluminium cut Guinea fowl feather with brass metallic tone. Incl silicon choker
 Metallic
 Pendant, 54mmx33mm Choker 45cmlong 4mm thick
 Aluminium
 14.5g

Weight 0.00 kg
 Dimensions 5.4 × 3.3 × 0.5 cm

SKU: TAM005
Category: [Jewellery & Accessories](#)



PENDANT WITH NECKLACE*, MEDIUM SIZE MOPANE LEAF: OXIDIZED 925 STERLING SILVER

Pendant with necklace*, medium size Mopane leaf: oxidized 925 Sterling Silver
 oxidized 925 Sterling Silver
 16 mm x 28 mm (with pendant loop)
 oxidized 925 Sterling Silver
 3.4g

Weight 0.1638 kg
 Dimensions 13 × 18 × 3.5 cm

SKU: HL10030a
Category: [Jewellery & Accessories](#)



PENDANT WITH NECKLACE*, MEDIUM SIZE MOPANE LEAF: 925 STERLING SILVER, WHITE FRESHWATER PEARL

Pendant with necklace*, medium size Mopane leaf: 925 Sterling Silver, white freshwater pearl
 925 Sterling Silver, white freshwater pearl
 16 mm x 30 mm (with pendant loop)
 925 Sterling Silver, white freshwater pearl
 3.5g

Weight 0.1638 kg
 Dimensions 13 × 18 × 3.5 cm

SKU: HL10031
Category: [Jewellery & Accessories](#)



PENDANT WITH NECKLACE*, LARGE MOPANE LEAF: OXIDIZED 925 STERLING SILVER, 4 MM PERIDOT*

Pendant with necklace*, large Mopane leaf: oxidized 925 Sterling Silver, 4 mm Peridot*
 oxidized 925 Sterling Silver, 4 mm Peridot*
 21 mm x 39 mm (with pendant loop)
 oxidized 925 Sterling Silver, 4 mm Peridot*
 7.2g

Weight 0.1638 kg
 Dimensions 13 x 18 x 3.5 cm

SKU: HL10033
Category: [Jewellery & Accessories](#)



PENDANT WITH NECKLACE*, MEDIUM SIZE MOPANE LEAF: 375 GOLD (9CT), 3 DIAMONDS (TOTAL 0.03 CT, I-J, SI)

Pendant with necklace*, medium size Mopane leaf: 375 Gold (9ct), 3 diamonds (total 0.03 ct, I-J, si)
 375 Gold (9ct), 3 diamonds (total 0.03 ct, I-J, si)
 17 mm x 29 mm (with pendant loop)
 375 Gold (9ct), 3 diamonds (total 0.03 ct, I-J, si)
 3.9g

Weight 0.1638 kg
 Dimensions 13 x 18 x 3.5 cm

SKU: HL10037a
Category: [Jewellery & Accessories](#)



PENDANT WITH NECKLACE*, SMALL SIZE MOPANE LEAF: 925 STERLING SILVER, DIAMOND (Ø 1.4 MM, I-J, SI)

Pendant with necklace*, small size Mopane leaf: 925 Sterling Silver, diamond (Ø 1.4 mm, I-J, si)
 925 Sterling Silver, diamond (Ø 1.4 mm, I-J, si)
 12 mm x 18 mm (with pendnat loop)
 925 Sterling Silver, diamond (Ø 1.4 mm, I-J, si)
 1.7g

Weight 0.1638 kg
 Dimensions 13 x 18 x 3.5 cm

SKU: HL10040
Category: [Jewellery & Accessories](#)



PENDANT WITH NECKLACE*, SUNBIRD / SUGARBIRD / HUMMING BIRD / COLIBRI: 925 STERLING SILVER

Pendant with necklace*, sunbird / sugarbird / hummingbird / colibri: 925 Sterling Silver
 925 Sterling Silver
 24 mm x 34 mm (with pendant loop)
 925 Sterling Silver
 3.0g

Weight 0.1638 kg
 Dimensions 13 x 18 x 3.5 cm

SKU: HL20130a
Category: [Jewellery & Accessories](#)



PENDANT WITH NECKLACE*, SUNBIRD / SUGARBIRD / HUMMING BIRD / COLIBRI: 925 STERLING SILVER, 4 MM PERIDOT*, 3 MM TOPAZ*, 3 MM CITRINE*

Pendant with necklace*, sunbird / sugarbird / humming bird / colibri: 925 Sterling Silver, 4 mm Peridot*, 3 mm Topaz*, 3 mm Citrine*
 925 Sterling Silver, 4 mm Peridot*, 3 mm Topaz*, 3 mm Citrine*
 47 x 25 mm (with pendant loop)
 925 Sterling Silver, 4 mm Peridot*, 3 mm Topaz*, 3 mm Citrine*
 6.3g

Weight 0.1638 kg
 Dimensions 13 x 18 x 3.5 cm

SKU: HL20130c
Category: [Jewellery & Accessories](#)



PENDANT WITH NECKLACE*, ACACIA / AFRICAN TREE: 375 GOLD (9CT), DIAMOND (Ø 1.9 MM, I-J, SI)

Pendant with necklace*, acacia / African tree: 375 Gold (9ct), diamond (Ø 1.9 mm, I-J, si)
 375 Gold (9ct), diamond (Ø 1.9 mm, I-J, si)
 27 mm x 26 mm (with pendant loop)
 375 Gold (9ct), diamond (Ø 1.9 mm, I-J, si)
 2.2g

Weight 0.1638 kg
 Dimensions 13 x 18 x 3.5 cm

SKU: HL20134a
Category: [Jewellery & Accessories](#)



PENDANT WITH NECKLACE*, ACACIA / AFRICAN TREE: 925 STERLING SILVER

Pendant with necklace*, acacia / African tree: 925 Sterling Silver
 925 Sterling Silver
 29 mm x 28 mm (with pendant loop)
 925 Sterling Silver
 2.4g

Weight 0.1638 kg
 Dimensions 13 x 18 x 3.5 cm

SKU: HL20143c
Category: [Jewellery & Accessories](#)



PENDANT WITH NECKLACE*, LARGE CAMELTHORN TREE SEED POD: OXIDIZED 925 STERLING SILVER

Pendant with necklace*, large camelthorn tree seed pod: oxidized 925 Sterling Silver
 oxidized 925 Sterling Silver
 31 mm x 23 mm
 oxidized 925 Sterling Silver
 7.2g

Weight 0.1638 kg
 Dimensions 13 x 18 x 3.5 cm

SKU: HL10020a
Category: [Jewellery & Accessories](#)



PENDANT WITH NECKLACE*, SMALL CAMELTHORN TREE SEED POD: 925 STERLING SILVER

Pendant with necklace*, small camelthorn tree seed pod: 925 Sterling Silver
 925 Sterling Silver
 22 mm x 15 mm (with pendant loop)
 925 Sterling Silver
 2.0g

Weight 0.1638 kg
 Dimensions 13 x 18 x 3.5 cm

SKU: HL10021

Category: [Jewellery & Accessories](#)



STUD EARRINGS SMALL CAMELTHORN TREE SEED POD: 925 STERLING SILVER

Stud earrings small camelthorn tree seed pod: 925 Sterling Silver
 925 Sterling Silver
 16 mm x 15 mm
 925 Sterling Silver
 4.0g

Weight 0.1638 kg
 Dimensions 13 x 18 x 3.5 cm

SKU: HL10023

Category: [Jewellery & Accessories](#)



EARRINGS SMALL CAMELTHORN TREE SEED POD: 925 STERLING SILVER

Earrings small camelthorn tree seed pod: 925 Sterling Silver
 925 Sterling Silver
 29 mm x 15 mm with hook
 925 Sterling Silver
 4.4g

Weight 0.1638 kg
 Dimensions 13 x 18 x 3.5 cm

SKU: HL10025

Category: [Jewellery & Accessories](#)



PENDANT WITH NECKLACE*, SMALL CAMELTHORN TREE SEED POD: 375 GOLD (9CT)

Pendant with necklace*, small camelthorn tree seed pod: 375 Gold (9ct)
 375 Gold (9ct)
 21 mm x 15 mm (with pendant loop)
 375 Gold (9ct)
 2.1g

Weight 0.1638 kg
 Dimensions 13 x 18 x 3.5 cm

SKU: HL10027

Category: [Jewellery & Accessories](#)



PENDANT WITH NECKLACE*, SMALL CAMELTHORN TREE SEED POD: 925 STERLING SILVER, BLACK DIAMOND (Ø 1.4 MM)

Pendant with necklace*, small camelthorn tree seed pod: 925 Sterling Silver, black diamond (Ø 1.4 mm)
 925 Sterling Silver, black diamond (Ø 1.4 mm)
 21 mm x 15 mm (with pendant loop)
 925 Sterling Silver, black diamond (Ø 1.4 mm)
 2.0g

Weight 0.1638 kg
 Dimensions 13 x 18 x 3.5 cm

SKU: HL10029a
Category: [Jewellery & Accessories](#)



PENDANT WITH NECKLACE*, RHINO: 925 STERLING SILVER, DIAMOND (Ø 1.4 MM, I-J, SI)

Pendant with necklace*, rhino: 925 Sterling Silver, diamond (Ø 1.4 mm, I-J, si)
 925 Sterling Silver, diamond (Ø 1.4 mm, I-J, si)
 24 x 20 mm (with pendant loop)
 925 Sterling Silver, diamond (Ø 1.4 mm, I-J, si)
 2.4g

Weight 0.1638 kg
 Dimensions 13 x 18 x 3.5 cm

SKU: HL5031
Category: [Jewellery & Accessories](#)



PENDANT WITH NECKLACE*, RHINO: 925 STERLING SILVER, BLACK DIAMOND (Ø 1.4 MM)

Pendant with necklace*, rhino: 925 Sterling Silver, black diamond (Ø 1.4 mm)
 925 Sterling Silver, black diamond (Ø 1.4 mm)
 24 x 20 mm (with pendant loop)
 925 Sterling Silver, black diamond (Ø 1.4 mm)
 2.4g

Weight 0.1638 kg
 Dimensions 13 x 18 x 3.5 cm

SKU: HL5032
Category: [Jewellery & Accessories](#)



PENDANT WITH 925 SILVER OMEGA NECKLACE (ADJUSTABLE LENGTH BETWEEN 42 AND 45 CM), RHINO FAMILY: 375 GOLD (9CT), 925 STERLING SILVER, DIAMOND (Ø 1.4 MM, I-J, SI)

Pendant with 925 silver Omega necklace (adjustable length between 42 and 45 cm), rhino family: 375 Gold (9ct), 925 Sterling Silver, diamond (Ø 1.4 mm, I-J, si)
 375 Gold (9ct), 925 Sterling Silver, diamond (Ø 1.4 mm, I-J, si)

375 Gold (9ct), 925 Sterling Silver, diamond (Ø 1.4 mm, I-J, si)
 4.7g

Weight 0.1638 kg
 Dimensions 13 x 18 x 3.5 cm

SKU: HL5033

Category: [Jewellery & Accessories](#)



COLLIER WITH 2 WARTHOGS: 925 STERLING SILVER, 375 GOLD (9CT), ADJUSTABLE LENGTH

Collier with 2 warthogs: 925 Sterling Silver, 375 Gold (9ct), adjustable length
 925 Sterling Silver, 375 Gold (9ct)
 Centre part: 300 x 140 mm; necklace length: adjustable between 420 and 450mm
 925 Sterling Silver, 375 Gold (9ct)
 3.9g

Weight 0.1638 kg
 Dimensions 13 x 18 x 3.5 cm

SKU: HL5042

Category: [Jewellery & Accessories](#)



PENDANT WITH NECKLACE*, UMBRELLA THORN TREE SEED POD: 925 STERLING SILVER

Pendant with necklace*, umbrella thorn tree seed pod: 925 Sterling Silver
 925 Sterling Silver
 18 mm x 16 mm Ø
 925 Sterling Silver
 3.6g

Weight 0.1638 kg
 Dimensions 13 x 18 x 3.5 cm

SKU: HL10004

Category: [Jewellery & Accessories](#)



PENDANT WITH NECKLACE*, SMALL COMBRETUM SEED POD: 375 GOLD (9CT)

Pendant with necklace*, small combretum seed pod: 375 Gold (9ct)
 375 Gold (9ct)
 14 mm Ø x 18 mm (with pendant loop)
 375 Gold (9ct)
 2.5g

Weight 0.1638 kg
 Dimensions 13 x 18 x 3.5 cm

SKU: HL10009

Category: [Jewellery & Accessories](#)



EARRINGS SMALL COMBRETUM SEED POD: 925 STERLING SILVER, WHITE FRESHWATER PEARLS

Earrings small combretum seed pod: 925 Sterling Silver, white freshwater pearls
 925 Sterling Silver, white freshwater pearls
 14 mm Ø x 38 mm with hook
 925 Sterling Silver, white freshwater pearls
 5.6g

Weight 0.1638 kg
 Dimensions 13 x 18 x 3.5 cm

SKU: HL10017

Category: [Jewellery & Accessories](#)



PENDANT WITH NECKLACE*, SMALL COMBRETUM SEED POD: 925 STERLING SILVER, WHITE FRESHWATER PEARL

Pendant with necklace*, small combretum seed pod: 925 Sterling Silver, white freshwater pearl

925 Sterling Silver, white freshwater pearl

14 mm Ø x 21 mm (with pendant loop)

925 Sterling Silver, white freshwater pearl

2.6g

Weight

0.1638 kg

Dimensions

13 x 18 x 3.5 cm

SKU: HL10019

Category: [Jewellery & Accessories](#)



PENDANT WITH NECKLACE*, SMALL SIZE AFRICA WITH ELEPHANT: 375 GOLD (9CT), OXIDIZED 925 STERLING SILVER

Pendant with necklace*, small size Africa with elephant: 375 Gold (9ct), oxidized 925 Sterling Silver

oxidized 925 Sterling Silver, 375 Gold (9ct)

26 x 19 mm (with pendant loop)

oxidized 925 Sterling Silver, 375 Gold (9ct)

4.5g

Weight

0.1638 kg

Dimensions

13 x 18 x 3.5 cm

SKU: HL4012

Category: [Jewellery & Accessories](#)



PENDANT WITH NECKLACE*, SMALL COMBRETUM SEED POD: 925 STERLING SILVER, GREY FRESHWATER PEARL

Pendant with necklace*, small combretum seed pod: 925 Sterling Silver, grey freshwater pearl

925 Sterling Silver, grey freshwater pearl

14 mm Ø x 21 mm (with pendant loop)

925 Sterling Silver, grey freshwater pearl

2.6g

Weight

0.1638 kg

Dimensions

13 x 18 x 3.5 cm

SKU: HL10019a

Category: [Jewellery & Accessories](#)



PENDANT WITH NECKLACE*, AFRICA: 375 GOLD (9CT)

Pendant with necklace*, Africa: 375 Gold (9ct)

375 Gold (9ct)

26 mm x 19 mm (with pendant loop)

375 Gold (9ct)

2.5g

Weight

0.1638 kg

Dimensions

13 x 18 x 3.5 cm

SKU: HL4031

Category: [Jewellery & Accessories](#)



PENDANT WITH NECKLACE*, LARGE CAMELTHORN TREE SEED POD: 925 STERLING SILVER

Pendant with necklace*, large camelthorn tree seed pod: 925 Sterling Silver
 925 Sterling Silver
 31 mm x 23 mm
 925 Sterling Silver
 7.2g

Weight 0.1638 kg
 Dimensions 13 x 18 x 3.5 cm

SKU: HL10020
Category: [Jewellery & Accessories](#)



PENDANT WITH 925 SILVER OMEGA NECKLACE (ADJUSTABLE LENGTH BETWEEN 42 AND 45 CM), ELEPHANT FAMILY: 375 GOLD (9CT), 925 STERLING SILVER

Pendant with 925 silver Omega necklace (adjustable length between 42 and 45 cm), elephant family: 375 Gold (9ct), 925 Sterling Silver
 375 Gold (9ct), 925 Sterling Silver
 57 mm x 17 mm
 375 Gold (9ct), 925 Sterling Silver
 4.2g

Weight 0.1638 kg
 Dimensions 13 x 18 x 3.5 cm

SKU: HL5012
Category: [Jewellery & Accessories](#)



PENDANT WITH NECKLACE*, ELEPHANT: 375 GOLD (9CT), DIAMOND (Ø 1.4 MM, I-J, SI)

Pendant with necklace*, elephant: 375 Gold (9ct), diamond (Ø 1.4 mm, I-J, si)
 375 Gold (9ct), diamond (Ø 1.4 mm, I-J, si)
 17 x 18 mm (with pendant loop)
 375 Gold (9ct), diamond (Ø 1.4 mm, I-J, si)
 1.2g

Weight 0.1638 kg
 Dimensions 13 x 18 x 3.5 cm

SKU: HL5017
Category: [Jewellery & Accessories](#)



PENDANT WITH NECKLACE*, ELEPHANT: 925 STERLING SILVER, BLACK DIAMOND (Ø 1.4 MM)

Pendant with necklace*, elephant: 925 Sterling Silver, black diamond (Ø 1.4 mm)
 925 Sterling Silver, black diamond (Ø 1.4 mm)
 17 x 19 mm (with pendant loop)
 925 Sterling Silver, black diamond (Ø 1.4 mm)
 1.0g

Weight 0.1638 kg
 Dimensions 13 x 18 x 3.5 cm

SKU: HL5019
Category: [Jewellery & Accessories](#)



COLLIER WITH 2 ELEPHANTS: 925 STERLING SILVER, 375 GOLD (9CT), ADJUSTABLE LENGTH

Collier with 2 elephants: 925 Sterling Silver, 375 Gold (9ct), adjustable length
 925 Sterling Silver, 375 Gold (9ct)
 Centre part: 28 x 12 mm; necklace length: adjustable between 420 and 450 mm
 925 Sterling Silver, 375 Gold (9ct)
 4..2g

Weight 0.1638 kg
 Dimensions 13 x 18 x 3.5 cm

SKU: HL5022
Category: [Jewellery & Accessories](#)



BRACELET ELEPHANT: 375 GOLD (9CT), 925 STERLING SILVER

Bracelet elephant: 375 Gold (9ct), 925 Sterling Silver
 375 Gold (9ct), 925 Sterling Silver
 elephant: 12.5 mm x 8 mm; length adjustable between 175 mm und 205 mm
 375 Gold (9ct), 925 Sterling Silver
 3.3g

Weight 0.1638 kg
 Dimensions 13 x 18 x 3.5 cm

SKU: HL5023
Category: [Jewellery & Accessories](#)



BRACELET ELEPHANT: 925 STERLING SILVER

Bracelet elephant: 925 Sterling Silver
 925 Sterling Silver
 elephant: 12.5 mm x 8 mm; length adjustable between 175 mm und 205 mm
 925 Sterling Silver
 3.2g

Weight 0.1638 kg
 Dimensions 13 x 18 x 3.5 cm

SKU: HL5023a
Category: [Jewellery & Accessories](#)



PENDANT WITH NECKLACE*, GUINEA FOWL FEATHER: 925 STERLING SILVER

Pendant with necklace*, guinea fowl feather: 925 Sterling Silver
 925 Sterling Silver
 24 x 11mm
 925 Sterling Silver
 1.7g

Weight 0.1638 kg
 Dimensions 13 x 18 x 3.5 cm

SKU: HL1041
Category: [Jewellery & Accessories](#)



PENDANT WITH NECKLACE*, CHAMELEON: 925 STERLING SILVER, WHITE FRESHWATER PEARL

Pendant with necklace*, chameleon: 925 Sterling Silver, white freshwater pearl
 925 Sterling Silver, white freshwater pearl
 22 x 14 mm (with pendant loop)
 925 Sterling Silver, white freshwater pearl
 3.1g

Weight 0.1638 kg
 Dimensions 13 x 18 x 3.5 cm

SKU: HL3001
Category: [Jewellery & Accessories](#)



PENDANT WITH NECKLACE*, CHAMELEON: 925 STERLING SILVER, GREY - BLACK FRESHWATER PEARL

Pendant with necklace*, chameleon: 925 Sterling Silver, grey - black freshwater pearl
 925 Sterling Silver, grey - black freshwater pearl
 22 x 14 mm (with pendant loop)
 925 Sterling Silver, grey - black freshwater pearl
 3.1g

Weight 0.1638 kg
 Dimensions 13 x 18 x 3.5 cm

SKU: HL3002
Category: [Jewellery & Accessories](#)



PENDANT WITH NECKLACE*, CHAMELEON: 925 STERLING SILVER, 750 GOLD (18CT), 5 MM TOPAZ*

Pendant with necklace*, chameleon: 925 Sterling Silver, 750 Gold (18ct), 5 mm Topaz*
 925 Sterling Silver, 750 Gold (18ct), 5 mm Topaz*
 22 x 14 mm (with pendant loop)
 925 Sterling Silver, 750 Gold (18ct), 5 mm Topaz*
 3.8g

Weight 0.1638 kg
 Dimensions 13 x 18 x 3.5 cm

SKU: HL3010
Category: [Jewellery & Accessories](#)



PENDANT WITH NECKLACE*, CHAMELEON: 925 STERLING SILVER, 750 GOLD (18CT), 5 MM PERIDOT*

Pendant with necklace*, chameleon: 925 Sterling Silver, 750 Gold (18ct), 5 mm Peridot*
 25 Sterling Silver, 375 Gold (9ct), 5 mm Peridot*
 22x 14 mm (with pendant loop)
 925 Sterling Silver, 750 Gold (18ct), 5 mm Peridot*
 3.8g

Weight 0.1638 kg
 Dimensions 13 x 18 x 3.5 cm

SKU: HL3012
Category: [Jewellery & Accessories](#)



PENDANT WITH NECKLACE*, PANGOLIN: 925 STERLING SILVER

Pendant with necklace*, pangolin: 925 Sterling Silver
 925 Sterling Silver
 25 x 19mm (with pendant loop)
 925 Sterling Silver
 8.0g

Weight 0.1638 kg
 Dimensions 13 x 18 x 3.5 cm

SKU: HL3040

Category: [Jewellery & Accessories](#)



PENDANT WITH NECKLACE*, SMALL SIZE AFRICA: 925 STERLING SILVER, 750 GOLD (18CT), 3 MM RHODOLITE* (GARNET)

Pendant with necklace*, small size Africa: 925 Sterling Silver, 750 Gold (18ct), 3 mm Rhodolite* (garnet)
 925 Sterling Silver, 750 Gold (18ct), 3 mm Rhodolite* (garnet)
 27 x 19mm (with pendant loop)
 925 Sterling Silver, 750 Gold (18ct), 3 mm Rhodolite* (garnet)
 4.2g

Weight 0.1638 kg
 Dimensions 13 x 18 x 3.5 cm

SKU: HL4005

Category: [Jewellery & Accessories](#)



PENDANT WITH NECKLACE*, MEDIUM SIZE AFRICA WITH ELEPHANT: 375 GOLD (9CT), 925 STERLING SILVER

Pendant with necklace*, medium size Africa with elephant: 375 Gold (9ct), 925 Sterling Silver
 925 Sterling Silver, 375 Gold (9ct)
 30 x 22 mm (with pendant loop)
 925 Sterling Silver, 375 Gold (9ct)
 5.5g

Weight 0.1638 kg
 Dimensions 13 x 18 x 3.5 cm

SKU: HL4009

Category: [Jewellery & Accessories](#)



PENDANT WITH NECKLACE*, NAMIBIA: 925 STERLING SILVER

Pendant with necklace*, Namibia: 925 Sterling Silver
 925 Sterling Silver
 24 x 16 mm (with pendant loop)
 925 Sterling Silver
 1.5g

Weight 0.1638 kg
 Dimensions 13 x 18 x 3.5 cm

SKU: HL4023

Category: [Jewellery & Accessories](#)



PENDANT WITH NECKLACE*, SMALL SIZE MOPANE LEAF: 925 STERLING SILVER

Pendant with necklace*, small size Mopane leaf: 925 Sterling Silver
 925 Sterling Silver
 12 mm x 18 mm (with pendnat loop)
 925 Sterling Silver
 1.7g

Weight 0.1638 kg
 Dimensions 13 x 18 x 3.5 cm

SKU: HL10039
Category: [Jewellery & Accessories](#)



STUD EARRINGS SMALL MOPANE LEAVES: 925 STERLING SILVER

Stud earrings small Mopane leaves: 925 Sterling Silver
 925 Sterling Silver
 12 mm x 13 mm
 925 Sterling Silver
 3.8g

Weight 0.1638 kg
 Dimensions 13 x 18 x 3.5 cm

SKU: HL10041
Category: [Jewellery & Accessories](#)



PENDANT WITH NECKLACE*, LARGE GUINEA FOWL FEATHER: 925 STERLING SILVER

Pendant with necklace*, large guinea fowl feather: 925 Sterling Silver
 925 Sterling Silver
 32 x 21mm
 925 Sterling Silver
 5.5g

Weight 0.1638 kg
 Dimensions 13 x 18 x 3.5 cm

SKU: HL1001
Category: [Jewellery & Accessories](#)



PENDANT WITH NECKLACE*, GUINEA FOWL FEATHER: 925 STERLING SILVER, WHITE FRESHWATER PEARL

Pendant guinea fowl feather: 925 Sterling Silver, white freshwater pearl, with necklace*
 925 Sterling Silver, white freshwater pearl
 28 x 16mm
 925 Sterling Silver, white freshwater pearl
 3.4g

Weight 0.1638 kg
 Dimensions 13 x 18 x 3.5 cm

SKU: HL1006
Category: [Jewellery & Accessories](#)



EARRINGS GUINEA FOWL FEATHER: 925 STERLING SILVER, WHITE FRESHWATER PEARLS

Earrings guinea fowl feather: 925 Sterling Silver, white freshwater pearls
 925 Sterling Silver, white freshwater pearls
 38 x 15mm
 925 Sterling Silver, white freshwater pearls
 7g

Weight 0.1638 kg
 Dimensions 13 x 18 x 3.5 cm

SKU: HL1007

Category: [Jewellery & Accessories](#)



STUD EARRINGS GUINEA FOWL FEATHER: 925 STERLING SILVER

Stud earrings guinea fowl feather: 925 Sterling Silver
 925 Sterling Silver, white freshwater pearls
 16 x 11mm
 925 Sterling Silver, white freshwater pearls
 3.2g

Weight 0.1638 kg
 Dimensions 13 x 18 x 3.5 cm

SKU: HL1033a

Category: [Jewellery & Accessories](#)



PENDANT WITH NECKLACE*, LARGE GUINEA FOWL FEATHER : 925 STERLING SILVER, LOOSLY SWINGING FAC. GEMS (4 MM CITRINE*, 3 MM TOPAZ*, 3 MM PERIDOT*)

Pendant with necklace*, large guinea fowl feather : 925 Sterling Silver, loosely swinging fac. gems (4 mm Citrine*, 3 mm Topaz*, 3 mm Peridot*)
 925 Sterling Silver, 4 mm Citrine*, 3 mm Topaz*, 3 mm Peridot*
 37 x 21mm
 925 Sterling Silver, 4 mm Citrine*, 3 mm Topaz*, 3 mm Peridot*
 6.3g

Weight 0.1638 kg
 Dimensions 13 x 18 x 3.5 cm

SKU: HL1040

Category: [Jewellery & Accessories](#)



PENDANT WITH SILVER ROLO CHAIN* (ADJUSTABLE LENGTH), UMBRELLA THORN TREE SEED POD (1 TWIST): 925 STERLING SILVER

Pendant with silver Rolo chain* (adjustable length), umbrella thorn tree seed pod (1 twist): 925 Sterling Silver
 925 Sterling Silver
 14 mm Ø x 6.5 mm
 925 Sterling Silver
 1.4g

Weight 0.1638 kg
 Dimensions 13 x 18 x 3.5 cm

SKU: HL10005

Category: [Jewellery & Accessories](#)

STUD EARRINGS UMBRELLA THORN TREE SEED POD: 925 STERLING SILVER



Stud earrings umbrella thorn tree seed pod: 925 Sterling Silver
925 Sterling Silver
13 mm Ø x 12 mm
925 Sterling Silver
2.8g

Weight 0.1638 kg
Dimensions 13 x 18 x 3.5 cm

SKU: HL10006

Category: [Jewellery & Accessories](#)

SKOONHEID BRACELET 2-ROW HONEY



Skoonheid Bracelet 2-Row Honey
Honey
±195mm
Glass- & artisanal beads
30g

Weight 0.01 kg
Dimensions 19.5 x 2.5 x 1.5 cm

SKU: OMB041

Category: [Jewellery & Accessories](#)

SKOONHEID BRACELET 1-ROW BLACK



Skoonheid Bracelet 1-Row Black
Black
±195mm
Glass- & artisanal beads
20g

Weight 0.01 kg
Dimensions 19.5 x 1.5 x 1.5 cm

SKU: OMB036

Category: [Jewellery & Accessories](#)

SKOONHEID BRACELET 1-ROW CREAM



Skoonheid Bracelet 1-Cream
Natural
±195mm
Glass- & artisanal beads
20g

Weight 0.01 kg
Dimensions 19.5 x 1.5 x 1.5 cm

SKU: OMB037

Category: [Jewellery & Accessories](#)

SKOONHEID BRACELET 1-ROW HONEY



Skoonheid Bracelet 1-Row Honey
Honey
±195mm
Glass- & artisanal beads
20g

Weight 0.01 kg
Dimensions 19.5 × 1.5 × 1.5 cm

SKU: OMB038

Category: [Jewellery & Accessories](#)

SKOONHEID BRACELET 2-ROW BLACK



Skoonheid Bracelet 2-Row Black
Black
±195mm
Glass- & artisanal beads
30g

Weight 0.01 kg
Dimensions 19.5 × 2.5 × 1.5 cm

SKU: OMB039

Category: [Jewellery & Accessories](#)

SKOONHEID BRACELET 2-ROW CREAM



Skoonheid Bracelet 2-Row Cream
Natural
±195mm
Glass- & artisanal beads
30g

Weight 0.01 kg
Dimensions 19.5 × 2.5 × 1.5 cm

SKU: OMB040

Category: [Jewellery & Accessories](#)

NYAE NYAE BRACELET M



Nyae Nyae Bracelet M
Dark Brown
±215mm
Glass- & artisanal beads
40g

Weight 0.01 kg
Dimensions 20 × 3.5 × 1 cm

SKU: OMB031

Category: [Jewellery & Accessories](#)

NYAE NYAE BRACELET S



Nyae Nyae Bracelet S
Natural
±195mm
Glass- & artisanal beads
40g

Weight 0.02 kg
Dimensions 19.5 × 4.5 × 1 cm

SKU: OMB032

Category: [Jewellery & Accessories](#)

SKOONHEID BRACELET BLACK



Skoonheid Bracelet Black
Black
±195mm
Glass- & artisanal beads
60g

Weight 0.02 kg
Dimensions 19.5 × 3.5 × 1.5 cm

SKU: OMB033

Category: [Jewellery & Accessories](#)

SKOONHEID BRACELET CREAM



Skoonheid Bracelet Cream
Natural
±195mm
Glass- & artisanal beads
60g

Weight 0.02 kg
Dimensions 19.5 × 3.5 × 1.5 cm

SKU: OMB034

Category: [Jewellery & Accessories](#)

SKOONHEID BRACELET HONEY



Skoonheid Bracelet Honey
Honey
±195mm
Glass- & artisanal beads
60g

Weight 0.02 kg
Dimensions 19.5 × 3.5 × 1.5 cm

SKU: OMB035

Category: [Jewellery & Accessories](#)

BRACELET CLASSIC-GEOMETRIC DESIGN



Bracelet Classic-Geometric Design
Natural and Brown
±195 - 235mm
Artisanal beads
30g

Weight 0.01 kg
Dimensions 21.5 × 2 × 1 cm

SKU: OMB012

Category: [Jewellery & Accessories](#)

BRACELET CLASSIC-GEOMETRIC DESIGN



Bracelet Classic-Geometric Design
Natural and Black
±195 - 235mm
Artisanal beads
30g

Weight 0.01 kg
Dimensions 21.5 × 2 × 1 cm

SKU: OMB013

Category: [Jewellery & Accessories](#)

BRACELET INTEGRATED 2-STRAND L



Bracelet Integrated 2-strand L
Natural
±215mm
Artisanal beads
20g

Weight 0.01 kg
Dimensions 21.5 × 1.5 × 1 cm

SKU: OMB014

Category: [Jewellery & Accessories](#)

BRACELET INTEGRATED 2-STRAND M



Bracelet Integrated 2-strand M
Natural
±215mm
Artisanal beads
20g

Weight 0.01 kg
Dimensions 21.5 × 1.5 × 1 cm

SKU: OMB015

Category: [Jewellery & Accessories](#)

BRACELET INTEGRATED 4-STRAND N



Bracelet Integrated 4-strand N
Natural
±215mm
Artisanal beads
50g

Weight 0.01 kg
Dimensions 21.5 × 3 × 1 cm

SKU: OMB016

Category: [Jewellery & Accessories](#)

BRACELET INTEGRATED 4-STRAND ZIPPY



Bracelet integrated 4-strand Zippy
Natural and Brown
±215mm
Artisanal beads
40g

Weight 0.01 kg
Dimensions 21.5 × 3 × 1 cm

SKU: OMB017

Category: [Jewellery & Accessories](#)

BRACELET INTEGRATED 4-STRAND HALF&HALF



Bracelet integrated 4-strand Half&Half
Natural and Brown
±215mm
Artisanal beads
40g

Weight 0.01 kg
Dimensions 21.5 × 3 × 1 cm

SKU: OMB018

Category: [Jewellery & Accessories](#)

BRACELET INTEGRATED 4-STRAND NB



Bracelet integrated 4-strand NB
Natural and Black
±215mm
Artisanal beads
40g

Weight 0.01 kg
Dimensions 21.5 × 3 × 1 cm

SKU: OMB019

Category: [Jewellery & Accessories](#)

INDEX

A

Accented Africa Tote 25
Africa Patch Bags 17
Africa Statement Necklace 11
African Print Tote Bags 26
Aluminium & Glass Necklace 8
Animal Cutout Necklaces 10
Antique Omba Shells 7
Assorted Bead & Ostrich Shell Necklaces 21
Assorted Beaded Bracelets 30, 38
Assorted Beaded Necklaces (Orange & Brown) 33
Assorted Belts 28
Assorted Cuffs 37
Assorted Dog Collars 29
Assorted Fabric Pouches 26
Assorted Leather Namibia Bracelets 19
Assorted Long Beaded Necklaces 22
Assorted Precious Stone Beaded Necklaces 30
Assorted Ubuntu Bags 29
Assorted White beaded bracelets 38
Assorted Zip Pouches 19

B

B&W beaded necklace 39
B&W contrast bracelet 38
B&W Tubular Beaded Bracelets 38
Basking Lizard Earrings 9
Beaded Animal Charm Bracelet 36
Beaded Chain Earrings 21
Beaded Charm 26
Beaded Coil Bracelets 33
Beaded Cuff Bracelet w/ Flower 33
Beaded Elephant Earrings 26
Beaded Elephant Necklace 22
Beaded Flag Colours Bracelet 16
Beaded Gemstone Necklaces 22
Beaded Statement Necklaces 37
Beaded Traditional Earrings 12
Beaded Traditional Earrings (Pink) 12
Beaded Traditional Necklaces 11
Beaded Traditional Necklaces (Pink) 11
Beaded Tubular Necklaces 16
Black & White Beaded Twist Necklace 37
Black & White Cuffs 36
Black Cross Ring 15
Bold Zebra Bead Jewellery Coordinate 34
Bracelet Classic Large 39
Bracelet Classic Medium 39
Bracelet Classic Small 40
Bracelet Classic-Geometric Design 58
Bracelet elephant: 375 Gold (9ct), 925 Sterling Silver 50
Bracelet elephant: 925 Sterling Silver 50

Bracelet guinea fowl feather: 925 Sterling Silver, white freshwater pearls, adjustable length 41
 Bracelet Integrated 2-strand L 58
 Bracelet Integrated 2-strand M 58
 Bracelet integrated 4-strand Half&Half 59
 Bracelet Integrated 4-strand N 59
 Bracelet integrated 4-strand NB 59
 Bracelet integrated 4-strand Zippy 59
 Bright Stitch Pouch 19
 Brown Springbok Cuff 8

C

Cameo Silhouette Necklace 13
 Cameo Statement Earrings (Dark) 16
 Cameo Statement Earrings (Light) 12
 Ceramic Pendants 31
 Collier with 2 elephants: 925 Sterling Silver, 375 Gold (9ct), adjustable length 50
 Collier with 2 warthogs: 925 Sterling Silver, 375 Gold (9ct), adjustable length 47
 Colour Block Circle Earrings 32
 Copper Bangles 19
 Cotton Elephant Puch 27
 Cowhide Messenger (Black) 5
 Cream Cuffs 36
 Crochet Clutch Crossbody 24
 Crochet Hats 23
 Cutout Pendant Necklace 10

D

Diamond Pin 34
 Drawstring Pouch 5

E

Earrings Guinea fowl feather Brass 41
 Earrings Guinea fowl feather Natural 41
 Earrings guinea fowl feather: 925 Sterling Silver, white freshwater pearls 54
 Earrings small camelthorn tree seed pod: 925 Sterling Silver 45
 Earrings small combretum seed pod: 925 Sterling Silver, white freshwater pearls 47
 Elephant Charm Bracelet 17
 Elephant Drawstring Bags 25
 Elephant Laser Engraved Earrings 35
 Embroidered Caps 18
 Embroidered Glasses Pouches 29

F

Fish Charm Beaded Bracelet 20
 Friendship Bracelet 25
 Fringe Tassel Keychain Clips 27
 Fur Clamp Necklace 8
 Fur Leather Clamp Necklace 7

G

Giraffe Tote 17
 Glass Bead Rings 10
 Guinea Fowl Feather Pendant 35

H

Heart Tassel Keychains 3
 Heptagon Rings 15

I

Indigo Multi-strand Necklace 31
 Insect Keychains 34

K

Kudu Crossbody Bag 4
 Kudu Zip Pouch 3

L

Laser-cut Fabric earrings 34
 Leather Crossbody Bags 29
 Leather Elephant Keychain 2
 Leather Rhino Keychain 2
 Leather Spectacles Cases 4
 Leather Travel Bag 28

M

Malachite Earrings 21
 Messenger Bags 28
 Mini Leather Wallets 30
 Mixed Print Pouches 27
 Moonstone Ring 14
 Multi-colored Beaded Necklace 17

N

Namibian Colours Necklace 23
 Namibian Map Tote 18
 Nature-inspired Pendants 35
 Negative Space Ring 13
 Nyae Nyae Bracelet M 56
 Nyae Nyae Bracelet S 57

O

Omba Statement Necklace 6
 Onyx Ring 14
 Orange Springbok Cuff 9
 Ostrich Shell Earrings 20
 Ovahimba-inspired Necklace 36

P

Painted Giraffe Tote 6
 Pendant large Guinea fowl feather Brass 42
 Pendant small Guinea fowl feather Brass 42
 Pendant small Guinea fowl feather Natural 41
 Pendant with 925 silver Omega necklace (adjustable length between 42 and 45 cm), elephant family: 375 Gold (9ct), 925 Sterling Silver 49
 Pendant with 925 silver Omega necklace (adjustable length between 42 and 45 cm), rhino family: 375 Gold (9ct), 925 Sterling Silver, diamond (Ø 1.4 mm, I-J, si) 46
 Pendant with necklace*, acacia / African tree: 375 Gold (9ct), diamond (Ø 1.9 mm, I-J, si) 44
 Pendant with necklace*, acacia / African tree: 925 Sterling Silver 44
 Pendant with necklace*, Africa: 375 Gold (9ct) 48
 Pendant with necklace*, chameleon: 925 Sterling Silver, 750 Gold (18ct), 5 mm Peridot* 51
 Pendant with necklace*, chameleon: 925 Sterling Silver, 750 Gold (18ct), 5 mm Topaz* 51
 Pendant with necklace*, chameleon: 925 Sterling Silver, grey - black freshwater pearl 51
 Pendant with necklace*, chameleon: 925 Sterling Silver, white freshwater pearl 51
 Pendant with necklace*, elephant: 375 Gold (9ct), diamond (Ø 1.4 mm, I-J, si) 49
 Pendant with necklace*, elephant: 925 Sterling Silver, black diamond (Ø 1.4 mm) 49
 Pendant with necklace*, guinea fowl feather: 925 Sterling Silver 50

- Pendant with necklace*, guinea fowl feather: 925 Sterling Silver, white freshwater pearl 53
- Pendant with necklace*, large camelthorn tree seed pod: 925 Sterling Silver 49
- Pendant with necklace*, large camelthorn tree seed pod: oxidized 925 Sterling Silver 44
- Pendant with necklace*, large guinea fowl feather : 925 Sterling Silver, loosely swinging fac. gems (4 mm Citrine*, 3 mm Topaz*, 3 mm Peridot*) 54
- Pendant with necklace*, large guinea fowl feather: 925 Sterling Silver 53
- Pendant with necklace*, large Mopane leaf: oxidized 925 Sterling Silver, 4 mm Peridot* 43
- Pendant with necklace*, medium size Africa with elephant: 375 Gold (9ct), 925 Sterling Silver 52
- Pendant with necklace*, medium size Africa: oxidized 925 Sterling Silver, 750 Gold (18ct), 3 mm Peridot* 40
- Pendant with necklace*, medium size Mopane leaf: 375 Gold (9ct), 3 diamonds (total 0.03 ct, I-J, si) 43
- Pendant with necklace*, medium size Mopane leaf: 925 Sterling Silver, white freshwater pearl 42
- Pendant with necklace*, medium size Mopane leaf: oxidized 925 Sterling Silver 42
- Pendant with necklace*, Namibia: 375 Gold (9ct) 40
- Pendant with necklace*, Namibia: 925 Sterling Silver 52
- Pendant with necklace*, pangolin: 925 Sterling Silver 52
- Pendant with necklace*, pangolin: 925 Sterling Silver, 375 Gold (9ct), 4 mm Rhodolite* (garnet) 40
- Pendant with necklace*, rhino: 925 Sterling Silver, black diamond (Ø 1.4 mm) 46
- Pendant with necklace*, rhino: 925 Sterling Silver, diamond (Ø 1.4 mm, I-J, si) 46
- Pendant with necklace*, small camelthorn tree seed pod: 375 Gold (9ct) 45
- Pendant with necklace*, small camelthorn tree seed pod: 925 Sterling Silver 45
- Pendant with necklace*, small camelthorn tree seed pod: 925 Sterling Silver, black diamond (Ø 1.4 mm) 46
- Pendant with necklace*, small combretum seed pod: 375 Gold (9ct) 47
- Pendant with necklace*, small combretum seed pod: 925 Sterling Silver, grey freshwater pearl 48
- Pendant with necklace*, small combretum seed pod: 925 Sterling Silver, white freshwater pearl 48
- Pendant with necklace*, small size Africa with elephant: 375 Gold (9ct), oxidized 925 Sterling Silver 48
- Pendant with necklace*, small size Africa: 925 Sterling Silver, 750 Gold (18ct), 3 mm Rhodolite* (garnet) 52
- Pendant with necklace*, small size Mopane leaf: 925 Sterling Silver 53
- Pendant with necklace*, small size Mopane leaf: 925 Sterling Silver, diamond (Ø 1.4 mm, I-J, si) 43
- Pendant with necklace*, sunbird / sugarbird / humming bird / colibri: 925 Sterling Silver 43
- Pendant with necklace*, sunbird / sugarbird / humming bird / colibri: 925 Sterling Silver, 4 mm Peridot*, 3 mm Topaz*, 3 mm Citrine* 44
- Pendant with necklace*, umbrella thorn tree seed pod: 925 Sterling Silver 47
- Pendant with silver Rolo chain* (adjustable length), umbrella thorn tree seed pod (1 twist): 925 Sterling Silver 54
- Pyrite Nugget Pendant 15

R

- Round Handle Tote 24
- Rounded Square Rings 12

S

- Sculpted Concave Earrings 15
- Sculpted Concave Rings 14
- Shell & Bead Necklace 6
- Skoonheid Bracelet 1-Row Black 55
- Skoonheid Bracelet 1-Row Cream 55
- Skoonheid Bracelet 1-Row Honey 56
- Skoonheid Bracelet 2-Row Black 56
- Skoonheid Bracelet 2-Row Cream 56
- Skoonheid Bracelet 2-Row Honey 55
- Skoonheid Bracelet Black 57
- Skoonheid Bracelet Cream 57

Skoonheid Bracelet Honey 57
Springbok Fur Frame Necklace 8
Stamp-printed Tote Bags 37
Striped Beaded Bracelets 31
Striped Beaded Necklace 22
Stud earrings guinea fowl feather: 925 Sterling Silver 54
Stud earrings small camelthorn tree seed pod: 925 Sterling Silver 45
Stud earrings small Mopane leaves: 925 Sterling Silver 53
Stud earrings umbrella thorn tree seed pod: 925 Sterling Silver 55
Suede Tote Bags 27

T

Teardrop Bead Charm Earrings 32
Traditional Snuff Containers 7
Tubular Beaded Earrings 32
Tusk Barrel Messenger 5

U

Upside-Down Teardrop Necklace 13

W

Whimsy Spiral Earrings 33
White Sparkle Ring 13
Wild Silk Scarves 39
Wood Circle Earrings 10
Woven Crochet Crossbody 24
Wrap Leather Pouch 3

Z

Zebra & Leather Satchel 4